



ORC European Championship 2016 Sailing Instructions



2016 ORC European CHAMPIONSHIP

NAUTICAL CLUB OF THESSALONIKI
PORTO CARRAS • GREECE

3 - 10 July 2016

Sailing Instructions

Part 1 - General

1 Organizing Authority

The **ORC European Championship 2016** is organized by the **Nautical Club of Thessaloniki** under the authority of the **Hellenic Sailing Federation** and under the overall authority of the **Offshore Racing Congress (ORC)**.

2 Rules

- 2.1 The regatta will be governed by the rules as defined in The Racing Rules of Sailing.
- 2.2 The following rules will also apply:
 - a) IMS Rule
 - b) ORC Rating Systems Rule
 - c) ORC Championship Rules
 - d) World Sailing Offshore Special Regulations
(all races will be Category 3 without the liferaft aboard)
- 2.3 **[DP]** Appendix 1 of these SI shall be applied for the bow numbers. Protests on the bow numbers can be lodged only by the Race Committee. This changes RRS 60.1 and 60.3
- 2.4 No national authority prescription will apply.
- 2.5 If there is a conflict between languages the English text will take precedence.
- 2.6 Part 2 of the Racing Rules of Sailing is replaced by Part B of the International Regulations for Preventing Collisions at Sea from sunset to sunrise.



ORC European Championship 2016 Sailing Instructions



3 Classes

3.1 Competing boats will be divided into Classes according to the CDL (Class Division Length) as follows:

Class A: 17,00 m \geq CDL > 11,60 m

Class B: 11,60 m \geq CDL > 9,70 m

Class C: 9,70 m \geq CDL \geq 8,00 m

3.2 In accordance with Championship Rule 6.2 the Organizing Authority has the right to group two classes if the minimum numbers are not matched. In this case, only one Championship title will be assigned to the combined classes. Classes will have separate starts and separate results.

4 Notices to competitors

Notices to competitors will be posted on the official notice board(s) located at the Race Office which will be at the Porto Carras Olympic Hall. Notices will also be posted on the event website.

5 Changes to Sailing Instructions

Any change to the Sailing Instructions will be posted not later than two hours before it will take effect, except that any change to the schedule of races will be posted by 20:00 hours on the day before it will take effect.

6 Signals made ashore

6.1 Signals made ashore will be displayed at the signal mast in front of the Race Office.

6.2 When flag AP is displayed ashore "1 minute" is replaced with "not less than 60 minutes" in race signal AP.

This changes race signal AP.

7 Schedule of races

7.1 Times of the first warning signals are defined as follow:

Tue 5/7/2016	13:55	Practice race
Wed 6/7/2016	10:55	Offshore race
Thu 7/7/2016	12:55	Inshore races
Fri 8/7/2016	10:55	Offshore or Inshore races
Sat 9/7/2016	12:55	Inshore races
Sun 10/7/2016	12:55	Inshore races

Times are local times UTC+3. The Organizing Authority and/or the Race Committee reserves the right to modify the above programme according to weather conditions and/or other unforeseen reasons.

7.2 Nine races are scheduled including two offshore races and seven inshore races. Inshore races will be windward/leeward, except when unusual or extreme local conditions make it impossible to sail a windward/leeward course. In this case, the International Jury may give permission to sail a substitute course.

7.3 Duration of races different from stated in NoR 8.3 and NoR 8.4 shall not be ground for seeking redress. This change RRS 60.1(b).

7.4 There will be no more than **3** races per day.



ORC European Championship 2016 Sailing Instructions



- 7.5 On the last day of regatta no warning signal will be given after 16:00 unless it follows signal of general recall or postponement (Flag AP) of a race whose first warning signal had been given before 16:00.

8 Class flags

The class flags will be:

CLASS A : Flag **R**

CLASS B : Flag **V**

CLASS C : Flag **E**

9 The Start

- 9.1 A boat starting later than 4 minutes in the inshore races and 10 minutes in the offshore race(s) after her Start signal will be scored DNS. This changes RRS A4.1.
- 9.2 After signalling an individual recall, the race committee will attempt to broadcast the sail number, bow number or name of boat that has not started and is identified as OCS on VHF. Delay in the radio broadcast of these calls, or the order in which there are made, or any omission or failure in the emission or reception of these, shall not be grounds for a request for redress by the boat. This changes RRS 60.1.(b).

10 Penalty System

- 10.1 The penalty for breaking a rule of Part 2 while outside a Zone will be One-Turn penalty – one tack and one gybe. This changes RRS 44.1.
- 10.2 For the offshore race, RRS 28 is changed as follows:
- (a) In rule 28.1, delete the first sentence and replace with:
"A boat shall cross the starting line after having been entirely on the pre-start side at or after her starting signal and sail the course described in the sailing instructions and finish."
 - (b) In rule 28.2, delete the first sentence and replace with:
"A string representing a boat's track from the time she begins to approach the starting line from its pre-start side to cross it until she finishes shall, when drawn taut, ..."
 - (c) Add new rule 28.3 Penalty:
"A boat that does not cross the starting line as required by rule 28.1 will receive the 20% scoring penalty as calculated in RRS 44.3 without a hearing. This changes RRS A4 and A5."
- 10.3 For minor breaches of the Offshore Special Regulations, paragraphs 7.1 or 7.2 of the ORC Championship rules, RRS 55 and any Sailing Instruction marked with "[DP]" the jury may impose any penalty different from Disqualification, or not impose a penalty, at its discretion.
- ## 11 Protests and requests for redress
- 11.1 In addition to complying with RRS 61, a protesting boat shall inform the Race Committee of her intention to protest and the identity of the protested boat(s) as soon as possible after finishing or retiring.
- 11.2 Protest forms are available at the race office. Protests shall be delivered there within the time limit which shall be:
- a) for inshore races: **60** minutes after the last boat has finished the last race of day. The same time limit applies to protests by the race committee and international jury about incidents



ORC European Championship 2016 Sailing Instructions



they observe in the racing area and to requests for redress (except as permitted in c) below). This changes RRS 61.3 and 62.2.

- b) for offshore races: **60** minutes after protestor's finish. If a boat finishes after 20:30, a protest can be logged from **09:00** until **10:00** the next day.

11.3 Notices to inform competitors of hearings in which they are parties or named as witnesses will be posted:

- a) for windward/leeward races within 30 minutes of the protest time limit
- b) for the offshore race, within 30 minutes of the finish of all the boats involved in the protest, except that Protest notices will not be posted between 21:00 on Wednesday July the 6th and 09:00 on Thursday July the 7th. In case of an offshore race on Friday July 8th this notice will be posted on Friday July the 8th and 09:00 on Saturday July the 9th.

11.4 On the last day of the regatta a request for reopening a hearing or request for redress shall be delivered:

- a) within the protest time limit if the party requesting reopening was informed of the decision on the previous day
- b) no later than 30 minutes after the party requesting reopening was informed of the decision on that day

This changes RRS 62.2 and 66.

11.5 When RRS N1.4(b) is applied the time limit will be 30 minutes after the decision is given.

11.6 The decisions of the International Jury will be final as provided in RRS 70.5.

12 Scoring

12.1 Windward/leeward race results will be determined by corrected times calculated using Performance Curve Scoring (PCS).

12.2 Offshore race results will be determined by corrected times calculated using Time-On-Time Offshore coefficient.

12.3 The decision on the scoring method and scoring parameters used will be at the sole discretion of the Race Committee and together with length of course, directions of leg and the wind speed will not be grounds for seeking redress by a boat. This changes RRS 60.1(b).

12.4 The championship is valid if at least 4 inshore races and 1 offshore race or at least 3 inshore races and 2 offshore races are completed. One discard will be allowed if 7 races are completed, but if there is only one offshore race completed in the series it shall not be discarded.

13 [DP] Safety regulations

13.1 Boats retiring for any reason in any race shall report to the Race Committee as soon as possible.

13.2 Any use of the engine for propulsion purposes for rescuing people, giving help or any other reason shall be reported after arrival in written form to the Race Committee stating reasons for such procedure. If a boat does not gain a significant advantage in the race, the International Jury may impose a discretionary penalty.

14 [DP] Replacement of crew or equipment

14.1 The Race Committee may approve crew changes (adding new crew members, replacing or disembarking crew members) by written skipper's request made no later than 2 hours before the scheduled time of the start of the first race of the day. The substituted crew member shall



ORC European Championship 2016 Sailing Instructions



not be aboard on any other competing boat throughout the remainder of the series. Crew substitutions in the Corinthian Division shall also be valid World Sailing Group 1 sailors. If not, the entry will be scored in the Open Division.

- 14.2 Substitution of damaged or lost equipment will be not allowed unless approved by the Race Committee. Requests for substitution shall be made to the Race Committee at the first reasonable opportunity.

15 Equipment and measurement checks

- 15.1 A boat or equipment may be inspected at any time for compliance with class rules and Sailing Instructions. On the water or after arriving in harbour, a boat may be instructed by the measurer on VHF channel **71** for **race area Alpha** and **72** for **race area Bravo** to proceed immediately for inspection.

- 15.2 The measurement checkpoint for sails is located at Porto Carras **Olympic Hall**.

- 15.3 One suit of sails plus one mainsail may be used in a series and shall have been measured and stamped by an ORC Measurer. The sails so stamped shall be marked for the event and shall not exceed in numbers the maxima permitted under ORC Rating Rule 206. *The maxima determined by the fastest GPH in the class will apply to all yachts of the class.*

With the exception of the second mainsail all sails must be carried aboard. This second mainsail shall have a minimum of one set of reef points. The mainsails may be interchangeable.

Sails damaged during the series may be repaired. Sails beyond repair may be replaced with permission of the International Jury.

This changes ORC Championship Rules 7.1.

16 Official boats

Official boats will display the organizer's Nautical Club of Thessaloniki flag. Failure of any official boat to display her flag will not be grounds for redress. This changes RRS 62.1(a).

Vessels used by press, photographers, film crews, VIPs etc. are not under the jurisdiction of the Race Committee. Any action by these vessels shall not be ground for seeking redress by participating boats. This changes RRS 60.1(b).

17 [DP] Support boats

All support boats shall keep well clear of the starting area and, after the preparatory signal, are not to approach within 100 meters of any competing boat. A breach of this SI may result to a scoring penalty against the boat connected and/or withdrawal of permission to be in the racing area for one or more days.

All support boats need to be registered at the race office. Identification numbers will be provided by the organizing committee. These numbers must be visible at all times.

18 [DP] Haul-out restriction

From 09:00 on Sunday July 3rd yachts shall not be hauled out except for the purposes of repairing damage; and only after written permission from the International Jury. While hauled for this purpose, cleaning and polishing of the hull below the waterline will not be permitted. Appendages shall not be removed from the boat during the series.

19 Communication

- 19.1 Radio communication with Race Committee during the regatta will be on VHF channel **71** for **race area Alpha** and **72** for **race area Bravo**. The Race Committee may give verbal confirmation



ORC European Championship 2016 Sailing Instructions



of any race signal over the above VHF channels. Failure to make a broadcast or time it accurately will not be grounds for a request for redress. This changes RRS 60.1(b).

- 19.2 **[DP]** Except when communicating with the race committee, a boat while racing shall not transmit or receive communication of any information not publicly available to all boats participating. This changes RRS 41.

20 Trophies and prizes

- 20.1 Prizes will be awarded to the 1st, 2nd and 3rd place winner of each class of the championship.
- 20.2 A prize will be awarded to the 1st place winner of each class for every race.
- 20.3 Prizes will be awarded to the 1st, 2nd and 3rd place winner of the Corinthian division of each class of the championship.
- 20.4 A prize will be awarded to the 1st place winner of the Corinthian division of each class for every race.
- 20.5 Single race award-giving ceremony will take place at 19:00 or 30 minutes after expiration of the protest time limit. Offshore race prizes will be awarded during the ceremony of the next day.

21 Disclaimer of liability

All those taking part in the regatta do so at their own risk and responsibility. The organizing authority, Nautical Club of Thessaloniki, Hellenic Sailing Federation, ORC and any other party involved in the organization of the ORC EUROPEAN CHAMPIONSHIP 2016, disclaim any and all responsibility whatsoever for loss, damage injury or inconvenience that might occur to persons and materials, both ashore and at sea as a consequence of participation in the event. Each boat owner or his representative accepts these terms by signing entry form. The attention of competitors is drawn to World Sailing Part 1 Fundamental Rule 4: A boat is solely responsible for deciding whether or not to start or to continue racing.



ORC European Championship 2016 Sailing Instructions



Part 2 - Inshore Courses

22 The courses

- 22.1 Diagram 1 shows the windward-leeward course, including the approximate angles between legs, the order in which marks are to be passed, and the side on which each mark is to be passed.
- 22.2 Two possible coastal courses for each race area (Alpha and Bravo) are described in Appendix 3, and shown indicatively on the map.
- 22.3 The race area (Alpha or Bravo) where each class will be racing will be posted on the notice board not later than two hours before the first warning signal of the day.
- 22.4 No later than the warning signal, the RC signal boat will display on a whiteboard the approximate compass bearing of the first leg and the number of laps (L2 or L3).
- 22.5 If weather conditions are not suitable for a windward-leeward race the RC may choose a coastal course. In this case the RC signal boat will display flag **K**, the number of the course, the distance and bearing of the first mark on a whiteboard.

23 Marks

- 23.1 Marks 1, 4s, 4p for race area Alpha will be yellow pyramid-shaped inflatable buoys. Mark 1a for race area Alpha will be a yellow thin cylindrical inflatable buoy.
- 23.2 Marks 1, 4s, 4p for race area Bravo will be yellow cylindrical inflatable buoys. Mark 1a for race area Bravo will be a yellow thin cylindrical inflatable buoy.
- 23.3 A new mark, as described in the next instruction, will be a yellow inflatable buoy with a blue band.
- 23.4 Coastal marks A and B will be yellow cylindrical inflatable buoys.

24 Change of the next leg of the course

To change the next leg of the windward-leeward course, the race committee will lay a new mark and remove the original mark as soon as practicable. A new windward mark will be placed without the offset mark.

25 Starting line

The starting line will be between a staff displaying an orange flag on the Race Committee boat at the starboard end and a staff displaying an orange flag at the port end.

26 Finishing line

The finishing line will be between a staff displaying a blue flag displayed on the Race Committee boat and a staff displaying an orange flag.

27 Time limit

- 27.1 The time limit of windward-leeward course for each boat in seconds is calculated by the formula **GPH x 12**.
- 27.2 The time limit of coastal courses for each boat in seconds is calculated by the formula **GPH x 20**.

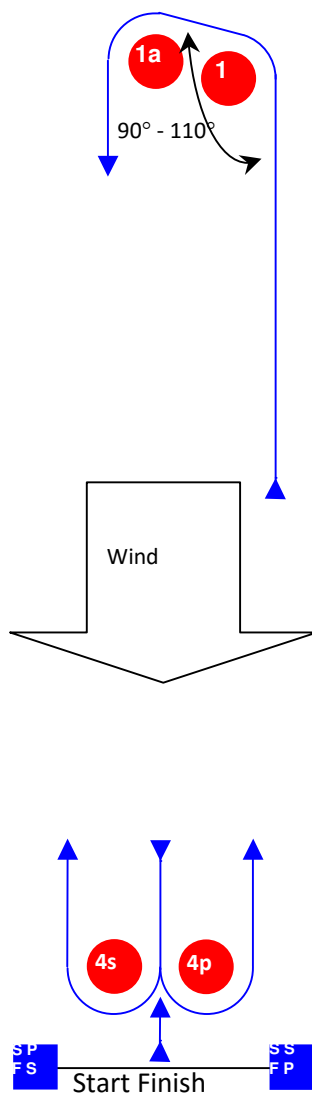


ORC European Championship 2016 Sailing Instructions



Diagram 1 – Windward Leeward

L



Course: Leeward finish

Signal	Mark Rounding Order
L2	Start – 1 – 1a – 4s/4p – 1 – 1a – Finish
L3	Start – 1 – 1a – 4s/4p – 1 – 1a – 4s/4p – 1 – 1a – Finish



ORC European Championship 2016 Sailing Instructions



Part 3 - Offshore Course

28 The Course

- 28.1 The Race Committee will choose one of the courses described in Appendix 2 by displaying on a whiteboard the number of the course to be sailed, before the warning signal.
- 28.2 The race may be shortened at any rounding mark by displaying flag S.

29 Marks

Rounding marks will be yellow cylindrical inflatable buoys. After sunset these marks will be staffs with an orange flag and a flashing light.

30 Windward mark

If necessary, the RC may set a windward mark cast one nautical mile away from the starting line, to achieve a start to windward. In this case, before the warning signal, the RC will display a red flag to indicate that the windward mark must be left to port or a green flag to indicate that the windward mark must be left to starboard.

31 Starting line

The starting line will be between a staff displaying an orange flag on the Race Committee boat at the starboard end and a staff displaying an orange flag at the port end.

32 Finishing line

- 32.1 The finishing line for the race will be between the green light at the entrance of Porto Carras Marina and a staff displaying a blue flag, set 0,15 NM from the green light bearing 270°. In case of a night finish there will be a flashing light on this staff.
- 32.2 If the race is shortened and in case of night finish, the finishing line will be between a staff with an orange flag and a flashing light and a staff with a blue flag and a flashing light.

33 Time Limit

- 33.1 The finish time limit in seconds is calculated for each boat by the formula $GPH \times S \times 2$, where S denotes the distance of the offshore course to be sailed as stated in Appendix 2. The finish time limits for each boat for every offshore course will be announced during the skipper's meeting.
- 33.2 Boats failing to finish within their time limit shall be scored with the number of points equal to the number of boats that started and finished within their time limit plus 1. This changes RRS 35 and A4.
- 33.3 Time limits remain unchanged in case of race shortening.

34 Finishing by night

Boats that finish by night shall illuminate their sail and bow numbers when finishing, and in case of doubt shall try to identify themselves to the RC after finishing.

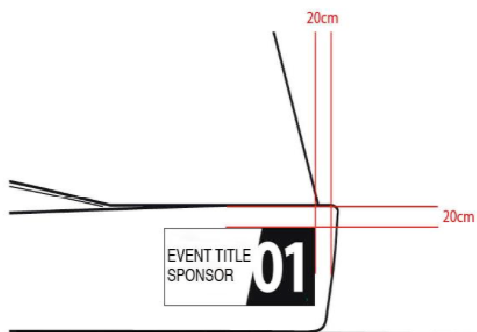


ORC European Championship 2016 Sailing Instructions

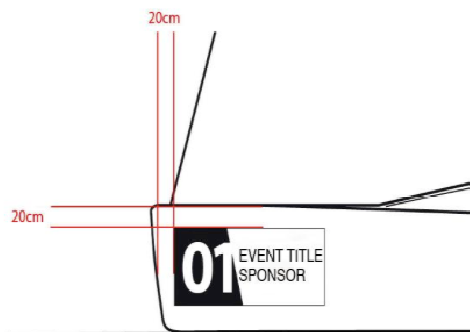


Appendix 1

Bow numbers shall be placed as forward as possible



CORRECT



NOT CORRECT





ORC European Championship 2016 Sailing Instructions



Appendix 2



Approximate waypoint coordinates

START (Neos Marmaras bay area)	N40 05.178 E23 46.487	FINISH (Porto Carras marina)	N40 04.651 E23 47.232
AMBELOS	N39 56.540 E23 55.430	KALLITHEA	N40 05.136 E23 28.007
MARK 1	N40 01.332 E23 47.053	MARK 2	N40 03.439 E23 46.893
MARK 3	N40 09.948 E23 27.116	NIKITI	N40 12.550 E23 39.330
NIKOLAOS	N39 56.360 E23 42.780	POTIDEA	N40 11.766 E23 21.030

Offshore Courses

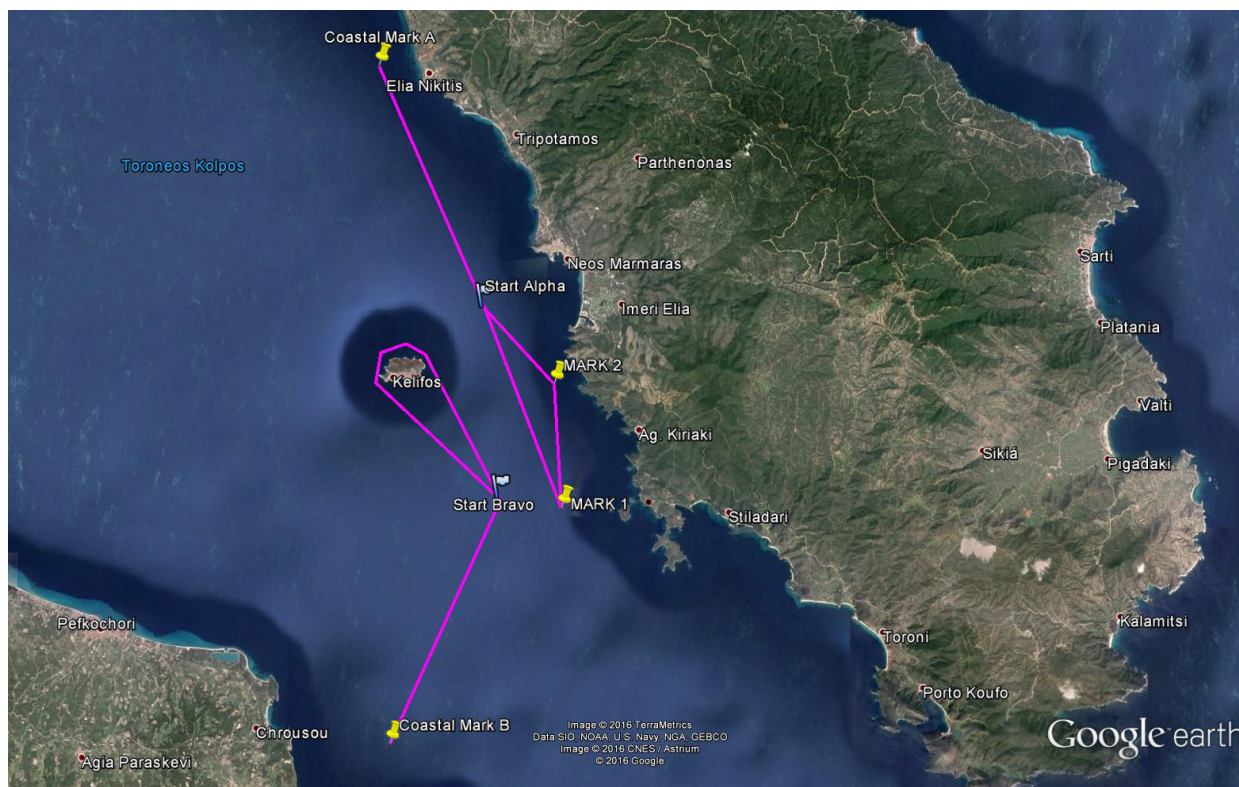
Course 1 (34 NM)	START - NIKOLAOS (port) - MARK 1 (stbd) - AMBELOS (port) - FINISH
Course 2 (30 NM)	START - NIKOLAOS (port) - AMBELOS (port) - FINISH
Course 3 (51 NM)	START - NIKITI (port) - NIKOLAOS (port) - MARK 1 (stbd) - AMBELOS (port) - FINISH Kelifos islet must be left to starboard
Course 4 (41 NM)	START - NIKITI (port) - MARK 1 (port) - AMBELOS (port) - FINISH
Course 5 (38 NM)	START - KALLITHEA (port) - NIKOLAOS (port) - FINISH
Course 6 (30 NM)	START - KALLITHEA (port) - MARK2 (port) - FINISH Kelifos islet must be left to port
Course 7 (44 NM)	START - POTIDEA (port) - MARK2 (port) - FINISH Kelifos islet must be left to port
Course 8 (34 NM)	START - MARK3 (port) - MARK2 (port) - FINISH Kelifos islet must be left to port
Course 9 (26 NM)	START - NIKITI (port) - MARK1 (port) - FINISH Kelifos islet must be left to port
Course 10 (23 NM)	START - NIKITI (port) - MARK2 (port) - FINISH Kelifos islet must be left to port



ORC European Championship 2016 Sailing Instructions



Appendix 3



Coastal Courses

Race Area Alpha	Coastal A1	Start Alpha - MARK1 - MARK2 - Start Alpha <i>For approximate coordinates of MARK1 & MARK2 see Appendix 2</i>
	Coastal A2	Start Alpha - Coastal Mark A - Start Alpha
Race Area Bravo	Coastal B1	Start Bravo - Coastal Mark B - Start Bravo
	Coastal B2	Start Bravo - Kelifos - Start Bravo Kelifos islet must be left to port