

# ***NACRA 17, 49er & 49erFX***

## **US National Championship**



### **Oakcliff Sailing**

### **Oyster Bay, NY, USA**

### **22 – 24 August 2014**

### **SAILING INSTRUCTIONS**

#### **1. RULES**

- 1.1. The regatta will be governed by the rules as defined in *The Racing Rules of Sailing* 2013-2016.
- 1.2. The Class Rules and the Championship Rules for the 49er, 49er FX, and the NACRA 17 Class will apply. IHC stickers will not be required on masts and sails and country flags will not be required on sails.
- 1.3. RRS Appendix P, Special Procedures For Rule 42, will apply.
- 1.4. Addendum Q, Umpired Fleet Racing, attached to these sailing instructions, will apply to the medal race.
- 1.5. US Sailing Prescriptions 60.3, 63.2 & 63.4 will not apply.
- 1.6. If there is a conflict between the NOR and the Sailing Instructions, the Sailing Instructions shall take precedence. This modifies rule 63.7.

#### **2. IDENTIFICATION**

- 2.1 Appendix G3, Identification on sails, will apply. Boats chartered or loaned for this event may carry national letters or a sail number in contravention of class rules. In no circumstances will a boat be permitted to race displaying the sail number of another boat in her class that is racing. This changes rule G3.



### 3. CAMERA and ELECTRONIC EQUIPMENT

- 3.1 Competitors may be required to carry on board cameras, sound equipment or positioning equipment as specified by the organizing authority. A boat shall not be given redress based on a claim involving this equipment. This changes rule 62.1. All competitors are requested to upload video or photo's to the Oakcliff Sailing facebook page and website.

### 4. NOTICES TO COMPETITORS

- 4.1 Notices to competitors will be posted on the official notice board located in the tent near the launching area.

### 5. CHANGES TO THE SAILING INSTRUCTIONS

- 5.1 Any change to the sailing instructions will be posted not less than two hours before the scheduled warning signal on the day it will take effect, except that any change to the schedule of races will be posted by 2000 hours on the day before it will take effect.

### 6. SIGNALS MADE ASHORE

- 6.1 Signals made ashore will be displayed at the official flagpole located on the outside of the regatta tent. When a signal is displayed over a class flag, it applies to that fleet only.
- 6.2 If AP is displayed ashore, '1 minute' is replaced with "not less than 45 minutes" in the race signal AP.
- 6.3 When flag Y is displayed ashore, rule 40, Personal Flotation Devices, applies at all times while afloat. The changes the Part 4 preamble.
- 6.4 If a change to the Sailing Instructions or Schedule is posted, a number flag corresponding to the change will be displayed.

### 7. SCHEDULE OF RACES

- |     |          |           |      |                                  |
|-----|----------|-----------|------|----------------------------------|
| 7.1 | Thursday | 21 August | 0800 | Boat Park Opens                  |
|     |          |           | 1400 | First Signal – Practice Races    |
|     |          |           | 2000 | Casual BBQ Dinner                |
|     | Friday   | 22 August | 0900 | Competitors Meeting              |
|     |          |           | 1100 | First Warning Signal             |
|     | Saturday | 23 August | 1200 | First Warning Signal             |
|     | Sunday   | 24 August | 1000 | First Warning Signal             |
|     |          |           | 1500 | No races started after this time |
- (Prize Giving and Closing Ceremony as soon as possible after the end of the Medal Races.)

### 8. FORMAT OF RACING

- 8.1 Eleven (11) Championship fleet races and a medal race are scheduled.
- 8.2 A Maximum of six (6) races per day for each fleet may be sailed at the discretion of the race committee.



- 8.3 One race is required to be completed to constitute a series
- 8.4 The medal race shall be identified by the display of code flag "G" [vertical yellow and blue stripes], with multiple sound signals PRIOR to the warning signal of the race.

## 9. CLASS FLAGS

- 9.1 The 49er class flag will be numeral pennant 1.
- 9.2 The FX class flag will be numeral pennant 2.
- 9.3 The NACRA class flag will be a NACRA 17 insignia on a white background.

## 10. RACING AREA

- 10.1 Addendum A shows the location of the race area.
- 10.2 The course location will be Cold Spring Harbor.

## 11. COURSES

- 11.1 Addendum B describes the courses to be sailed.
- 11.2 No later than the warning signal, the race committee signal vessel will display the approximate compass bearing from the RC signal boat to Mark 1.
- 11.3 The gate may be replaced by a single mark to be left to port.
- 11.4 On the last leg to the finish, Mark 2b does not need to be honored.

## 12. MARKS

- 12.1 Mark 1 (49er and FX) will be a Yellow Tetrahedron
- 12.2 Mark 1 (NACRA) will be an Orange Cylinder.
- 12.3 Mark 2 (gate) for all classes will be Orange Cylinders; if only one mark of the gate is in place, that mark shall be left to Port.
- 12.4 The starting line will be between a staff displaying the Oakcliff flag on the Signal boat and the course side of a green inflatable mark on the port side of the line.
- 12.5 The finish line will be between a staff displaying the Oakcliff Flag on the Signal boat and the course side of a red buoy on the starboard side of the line.

## 13. START

- 13.1 Boats whose Warning Signal has not been made shall avoid the starting area during the starting sequence for other races.
- 13.2 A boat starting later than four (4) minutes after her starting signal will be scored Did Not Start (DNS) without a hearing. This changes Rule A4.
- 13.3 Boats whose sails numbers are displayed and hailed as BFD by a Race Committee boat close to Mark 1 following a Black Flag Start shall clear the racecourse.

## 14. CHANGE OF COURSE

- 14.1 To change the next leg of the course, the race committee will lay a new mark (or move the finishing line). When in a subsequent change a new mark is replaced, it will be replaced by an original mark.
- 14.2 The change mark for the NACRA will be a Yellow Tetrahedron with a black stripe. The change mark for the 49er and FX will be an Orange Cylinder with a black stripe.



HERON  
FINANCIAL GROUP

WEALTH ADVISORS

## 15. INTENTIONALLY LEFT BLANK

## 16. TIME LIMITS

16.1 The time limit and target time for each class (in minutes) are as follows:

Class	First Mark Limit	Race Limit	Target Time
NACRA	25	60	45
49er&FX	20	45	30

16.2 A race in which no boat in a Class rounds the first mark within the above First Mark Limit following the start, or sails the course and finishes within the Race Limit following the start, will be abandoned.

16.3 Boats failing to finish within 15 minutes after the first boat sails the course and finishes will be scored Did Not Finish without a hearing. This changes Rules 35, A4 and A5.

16.4 Failure to meet the target time will not be grounds for redress. This changes rule 62.1(a).

## 17. PROTESTS & REQUESTS FOR REDRESS

17.1 Protest forms will be available at the Protest desk (under the tent). Protests and requests for redress shall be written on such forms and delivered to the Protest desk within the protest time limit.

17.2 The protest time limit is one (1) hour after the Race Committee Signal Boat docks; this time limit will be posted on the official notice board.

17.3 Notices will be posted on the official notice board promptly following the expiration of the protest time limit to inform competitors of the time and place of hearings in which they are parties or named as witnesses.

17.4 A request for reopening a hearing shall be delivered to the protest committee no later than 30 minutes after the party requesting reopening was informed of the decision. This changes rule 66.

17.5 Notices of protests by the race committee or protest committee will be posted on the notice board to inform boats under rule 61.1(b).

## 18. SCORING

18.1 The Low Point System as provided in rule Appendix A shall apply.

18.2 When fewer than five (5) races have been completed, a boat's series score will be the total of her race scores.

18.3 When five (5) or more races have been completed, a boat's series score will be the total of her race scores excluding her worst score, except that the score in the Medal Race, if sailed, cannot be discarded.

18.4 Scores for the Medal Race will be double the finishing place of each boat. This changes rule A4.1.

18.5 Ties in the series score between boats with different medal stage point scores shall be broken in favor of the boat that scored better in the medal stage. This changes rule Appendix A8.

## 19. PRIZES

19.1 Prizes will be awarded to the top three finishers in each class.



**HERON**  
FINANCIAL GROUP | WEALTH ADVISORS

## **20. SUPPORT & COACH BOATS**

- 20.1 Except when rendering assistance to a boat in danger at the boat's request or at the request of the race committee, support and coach boats shall stay 100 feet outside areas where boats are racing from the time of the Preparatory Signal for the first Class to start until the time the last boat finishes or the race committee signals a postponement, general recall or abandonment.
- 20.2 Support and coach boats shall be marked or identified as such.
- 20.3 The penalty for failing to comply with these requirements or the oral instructions of the race committee or of the protest committee will be at the discretion of the protest committee. The penalty may be imposed on any or all boats associated with the support or coach boat.

## **21. SAFETY REQUIREMENTS**

- 21.1 A boat that retires from a race or does not intend to start a scheduled race shall promptly report this to the race committee and receive acknowledgement. If this is not possible, she shall promptly report her actions to the Protest desk on shore at the launching area.
- 21.2 Prior to the Warning Signal for the first race a boat is scheduled to sail each race day, the boat shall sail on starboard tack past the stern of the Signal Boat, and shall hail her sail number until acknowledged by the race committee. Failure to comply with this SI will result in a three-place penalty in the first race that day without a hearing. This changes rule 63.1 and 64.1.

## **22. RADIO COMMUNICATION**

- 22.1 A boat shall neither make radio transmissions while racing nor receive radio communication not available to all boats. This restriction also applies to mobile devices.

## **23. TRASH DISPOSAL**

- 23.1 Trash may be placed aboard support or official boats.

## **24. DISCLAIMER**

- 24.1 Competitors participate in the regatta entirely at their own risk. See rule 4, Decision to Race. The organizing authority, race committee, host club and their officers, employees and volunteers will not accept any liability for material damage or personal injury or death sustained in conjunction with or prior to, during, or after the regatta.

## **25. INSURANCE**

- 25.1 Each participating boat shall be insured with valid third-party liability insurance with a minimum policy limit of US \$500,000 per occurrence or the equivalent.

## **26. CONTACTS**

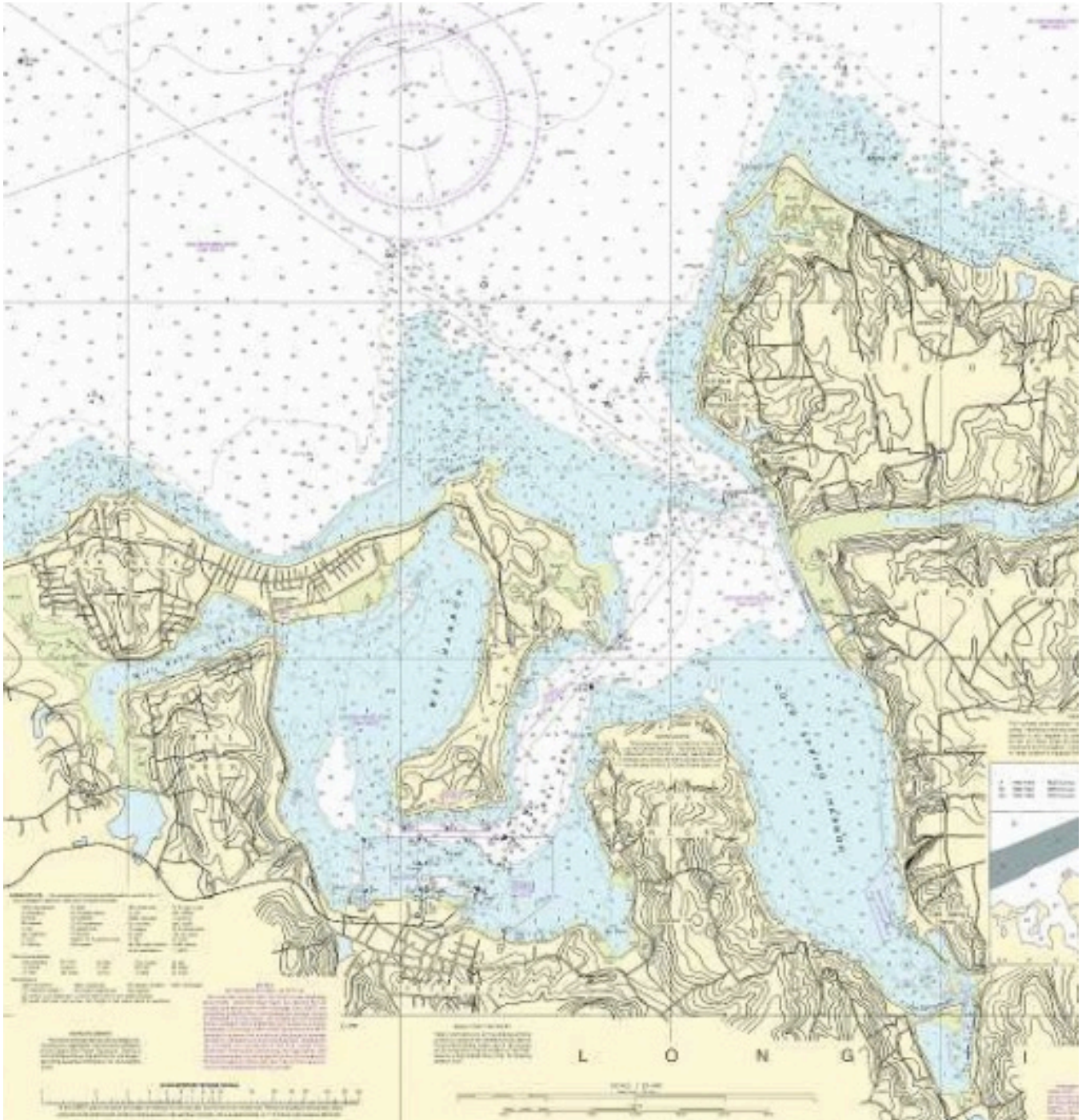
Elizabeth Shaw, PRO  
516 439-3044  
training@oakcliffsailing.org



**HERON**  
FINANCIAL GROUP | WEALTH ADVISORS



## ADDENDUM A - RACING AREA



**HERON**  
FINANCIAL GROUP | WEALTH ADVISORS

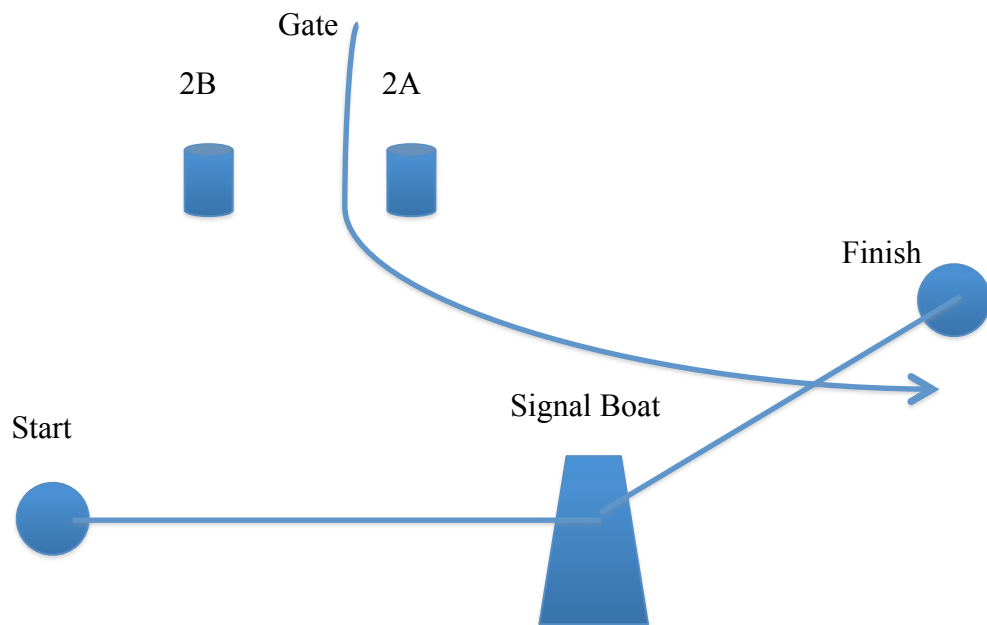
## **ADDENDUM B**



**Mark 1 NACRA**



**Mark 1 FX/49er**



### **COURSE**

**NACRA:** Start, Mark 1(NACRA), Gate, Mark 1 (NACRA), 2A, Finish

**49er/FX:** Start, Mark 1 (49er/FX), Gate, Mark 1 (49er/FX), 2A, Finish



**HERON**  
FINANCIAL GROUP | WEALTH ADVISORS

# ADDENDUM Q

## UMPIRED FLEET RACING

This addendum has been approved by ISAF in accordance with rule 86.2 and ISAF Regulation 28.1.3.

Version: January 21, 2013

Marginal marks indicate important changes from the previous version.

These sailing instructions change the definition Proper Course, and rules 20, 28.2, 44, 60, 61, 62, 63, 64.1, 65, 66, 70, 78.3 and B5.

### Q1 CHANGES TO RACING RULES

Additional changes to rules are made in instructions Q2, Q3, Q4, and Q5.

#### Q1.1 Changes to the Definitions and the Rules of Part 2 and Part 4

- (a) Add to the definition Proper Course: 'A boat taking a penalty or maneuvering to take a penalty is not sailing a proper course.'
- (b) When rule 20 applies, the following arm signals are required in addition to the hails:
  - (1) for 'Room to tack', repeatedly and clearly pointing to windward; and
  - (2) for 'You tack', repeatedly and clearly pointing at the other boat and waving the arm to windward.

#### Q1.2 Changes to Rules Involving Protests, Requests for Redress, Penalties and Exoneration

- (a) The first sentence of rule 44.1 is replaced with: 'A boat may take a One-Turn Penalty when she may have broken a rule of Part 2 (except rule 14 when she has caused damage or injury) or rule 31 or 42 while racing.'
- (b) Rule 60.1 is replaced with 'A boat may protest another boat or request redress provided she complies with instructions Q2.1 and Q2.4.'
- (c) The third sentence of rule 61.1(a) and all of rule 61.1(a)(2) are deleted.
- (d) Rules 62.1(a), (b) and (d) are deleted. In a race where this addendum applies, there shall be no scoring adjustments for redress given under any of these rules for a previous race.
- (e) Rule 64.1(a) is changed so that the provision for exonerating a boat may be applied by the umpires without a hearing, and it takes precedence over any conflicting instruction of this addendum.
- (f) Rules P1 to P4 shall not apply.

### Q2 PROTESTS AND REQUESTS FOR REDRESS BY BOATS

Q2.1 While racing, a boat may protest another boat under a rule of Part 2 (except rule 14) or under rule 31 or 42; however, a boat may only protest under a rule of Part 2 for an incident in which she was involved. To do so she shall hail 'Protest' and conspicuously display a red flag at the first reasonable opportunity for each. She shall remove the flag before, or at the first reasonable opportunity after a boat involved in the incident has taken a penalty voluntarily or after an umpire's decision.



Q2.2 A boat that protests as provided in instruction Q2.1 is not entitled to a hearing. Instead, a boat involved in the incident may acknowledge breaking a rule by taking a One-Turn Penalty as described in rule 44.2. If the protested boat does not take a penalty voluntarily, an umpire will decide whether to penalize any boat and signal the decision as provided in instruction Q3.1.

Q2.3 At the finishing line, the race committee will inform the competitors about each boat's finishing place or scoring abbreviation. After this has been done for all boats, the race committee will promptly display flag B with one sound. Two minutes later flag B will be removed with one sound.

Q2.4 A boat intending to

(a) protest another boat under a rule other than instruction Q3.2 or Q4.2(a), or a rule listed in instruction Q2.1,

(b) protest another boat under rule 14 if there was contact that caused damage or injury, or

(c) request redress

shall hail the race committee before or during the display of flag B. The same time limit applies to protests under instructions Q5.4 and Q5.5. The protest committee may extend the time limit if there is good reason to do so.

Q2.5 The race committee will promptly inform the protest committee about any protests or requests for redress made under instruction Q2.4.

### **Q3 UMPIRE SIGNALS AND IMPOSED PENALTIES**

Q3.1 An umpire will signal a decision as follows:

(a) A green and white flag with one long sound means 'No penalty.'

(b) A red flag with one long sound means 'A penalty is imposed or remains outstanding.' The umpire will hail or signal to identify each such boat.

(c) A black flag with one long sound means 'A boat is disqualified.' The umpire will hail or signal to identify the boat disqualified.

Q3.2 (a) A boat penalized under instruction Q3.1(b) shall take a One-Turn Penalty as described in rule 44.2.

(b) A boat disqualified under instruction Q3.1(c) shall promptly leave the course area.

### **Q4 PENALTIES AND PROTESTS INITIATED BY AN UMPIRE; ROUNDING OR PASSING MARKS**

Q4.1 When a boat

(a) breaks rule 31 and does not take a penalty,

(b) breaks rule 42,

(c) gains an advantage despite taking a penalty,

(d) deliberately breaks a rule,

(e) commits a breach of sportsmanship, or

(f) fails to comply with instruction Q3.2 or to take a penalty when required to do so by an umpire, an umpire may penalize her without a protest by another boat. The umpire may impose one or more One-Turn Penalties to be taken as described in rule 44.2, each signalled in accordance with instruction Q3.1(b), or disqualify her under instruction Q3.1(c), or report the incident to the protest committee for further action. If a boat is penalized under instruction Q4.1(f) for not taking a penalty or taking a penalty

incorrectly, the original penalty is cancelled.

Q4.2 (a) A boat shall not round or pass a mark on the wrong side. If she does so, she may correct her error as provided in rule 28.2 only if she does so before she rounds or passes the next mark or finishes.

(b) When a boat breaks instruction Q4.2(a) and fails to correct her error before rounding or passing the next mark or finishing, an umpire may disqualify her under instruction Q3.1(c).

Q4.3 An umpire who decides, based on his own observation or a report received from any source, that a boat may have broken a rule, other than instruction Q3.2 or Q4.2(a) or a rule listed in instruction Q2.1, may inform the protest committee for its action under rule 60.3. However, he will not inform the protest committee of an alleged breach of rule 14 unless there is damage or injury.

## **Q5 PROTESTS; REQUESTS FOR REDRESS OR REOPENING; APPEALS; OTHER PROCEEDINGS**

Q5.1 No proceedings of any kind may be taken in relation to any action or non-action by an umpire.

Q5.2 A boat may not base an appeal on an alleged improper action, omission or decision of the umpires or the protest committee. In rule 66 the third sentence is changed to 'A party to the hearing may not ask for a reopening.'

Q5.3 (a) Protests and requests for redress need not be in writing.

(b) The protest committee may take evidence and conduct the hearing in any way it considers appropriate and may communicate its decision orally.

(c) If the protest committee decides that a breach of a rule has had no effect on the outcome of the race, it may impose a penalty of points or fraction of points or make another arrangement it decides is equitable, which may be to impose no penalty.

Q5.4 The race committee will not protest a boat, except following a report under rule 43.1(c) or 78.3.

Q5.5 The protest committee may protest a boat under rule 60.3. However, it will not protest a boat for breaking instruction Q3.2 or Q4.2(a), a rule listed in instruction Q2.1, or rule 14 unless there is damage or injury.